

**Department of Pathology**  
**Government Medical College – Karur**

**1. Inception Year**

The Department Established in the year 2018

**2. Services Provided**

The following services are provided to the **OUTPATIENT & INPATIENT 24 x 7**

<b>BLOOD</b>	<b>CYTOLOGY</b>	<b>URINE</b>
COMPLETE BLOOD COUNT ESR PERIPHERAL SMEAR PS FOR MP,MF RETICULOCYTE COUNT OSMOTIC FRAGILITY TEST SICKLING TEST BONE MARROW ASPIRATION STUDY BT,CT PT, APTT D-DIMER ASSAY	FINE NEEDLE ASPIRATION CYTOLOGY IMPRINT CYTOLOGY FLUID CELL COUNT ALL TYPE OF FLUID CYTOLOGY CELL BLOCK PAP SMEAR SEMEN ANALYSIS STOOL OCCULT BLOOD	PH, SPECIFIC GRAVITY ALBUMIN, SUGAR PROTEINS BILE SALT BILE PIGMENTS KETONE BODIES DEPOSITS NITITES LEUKOCYTES BLOOD HEMOGLOBIN

**3. Special Procedure**

- Immuno Histochemistry
- Cytochemistry
- Histochemical stains

**4. Academic Activities**

- ✓ We are taking 4 theory classes per week which includes Self Directed Learning, Small Group Discussion, Case Based Learning, Seminar, and Vertical & Horizontal Integration.
- ✓ 2 Practical classes per week
- ✓ 1 AETCOM module Session per month
- ✓ IMG posted 2 days in the central laboratory in rotation basis
- ✓ CME conducted in the topic “ A Journey Through Blood” on 15.12.2021
- ✓ We conducted “Path Expo’ 24 by the under graduate students 2024
- ✓ Every year we conduct a Medal Exam for the Undergraduate

- ✓ We are participating in Clinical Society Meeting
- ✓ We also have DRP Postgraduate training program
- ✓ We Conducted Parents Teacher Meeting
- ✓ We are Taking classes for B.Sc- Radiology & Imaging Technology  
And B.Sc – Operation Theatre & Anesthesia Technology

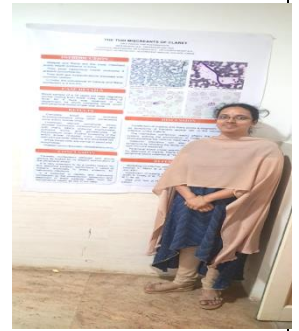
## 5. Achievements

YEAR	ACHIEVEMENTS
2021	<ul style="list-style-type: none"> <li>➤ We Conducted CME program for Under Graduate students “ A Journey Through Blood” on 15.12.2021</li> </ul>
2022	<ul style="list-style-type: none"> <li>➤ We Plan to start a trial for “IMMUNOHISTOCHEMISTRY” for cancer patients.</li> <li>➤ We Conducted “REAL HEROS MARATHON’22 for blood donation awareness to the public’s on 30<sup>th</sup> October 2022. The program inaugurated by the District Collector and Award was given for the winners.</li> </ul>
2023	<ul style="list-style-type: none"> <li>➤ We Plan to start a trial for Special stains for Histopathology for rare cases</li> <li>➤ We Conducted “Rally to create a awareness about the voluntary blood donation to the public’s on 14.06.2023. The program was inaugurated by the District Collector.</li> <li>➤ We identified a very rare Blood group for Antenatal Mother ( MnM Antibodies).</li> </ul>
2024	<ul style="list-style-type: none"> <li>➤ We conducted <b>“Path Expo” 24</b> by the under graduate students. The program was inaugurated by the district collector and appreciated the students for their tremendous work and encouraged the students. He distributed the prize for the best model created by the Under Graduate students.</li> <li>➤ We take part in the Master Health Check up program for the Faculties.</li> <li>➤ We implemented the camera assisted microscopy teaching method to the undergraduate students for practical’s.</li> <li>➤ We Implemented the LMIS (laboratory Management integrated system) for reporting.</li> <li>➤ All the reports were given in a standard printed report format to the patients with in the shortest turnaround time period.</li> <li>➤ We implemented a CAP (College of American for Pathologist) protocol reporting system for all the cancer reports.</li> <li>➤ In the DRP PG training period – the Trained PG got 2<sup>nd</sup> price for poster presentation in the CME conducted in GOVT TANJAVUR MEDICAL COLLEGE</li> <li>➤ Our department diagnosed a rare case of combined Malaria &amp; Filarial parasite in a same patient</li> <li>➤ We diagnosed a Rare Blood Group (Bombay Negative ) for Antenatal patient.</li> </ul>

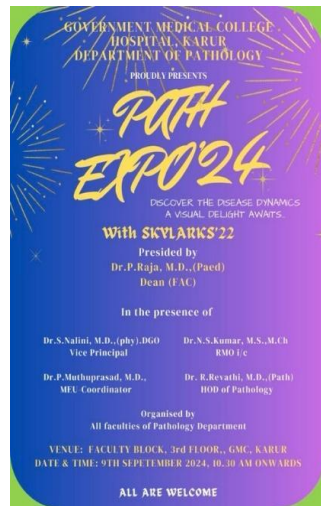
### MEDAL EXAM WINNER



### POSTER PRESENTATION WINNER



### Path Expo 2024

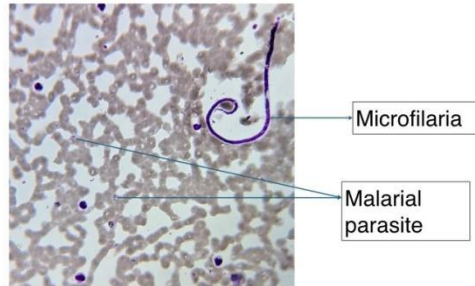


2025

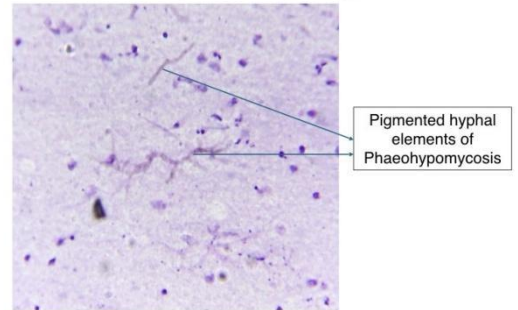
- We Started ImmunoHistochemistry (ER,PR,Her 2 & Ki67) for Breast Cancer patients for their better Diagnosis & Prognosis.
- We participating in EQAS for IHC and we got outstanding reports and appreciated by the EQAS (External Quality assurance Scheme) by TATA memorial hospital for the reports.
- We participating in NQAS( National Quality Assurance standards) from CMC vellore for clinical pathology.
- We are doing “Special Stains” ( PAS,Fite faraco, AFB) for rare cases
- we conducted “Gold Medal Exam” for under graduate students and award was given to the MBBS students.
- We Conducted Parents Teacher Meeting once in 3 months
- Our department diagnosed a rare disease like
  - 1.Inflammatory myofibroblastic tumor in the Breast
  - 2.Pagets disease of nipple & Confirmed with IHC
  - 3.Benign Nephrosclerosis
  - 4.Concominant Microfilaria & Malaria Parasite in same individual
- We take part in the Master Health Check up program for the Corporation workers and Labors.

## Interesting Cases

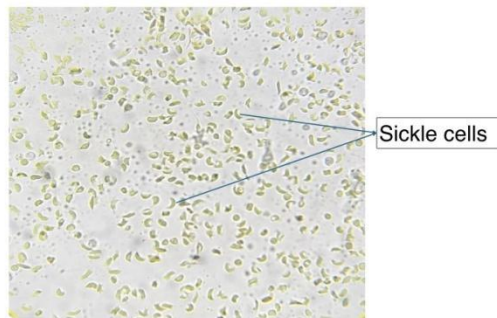
CONCOMINANT MICROFILARIA & MALARIAL PARASITE IN PERIPHERAL BLOOD SMEAR



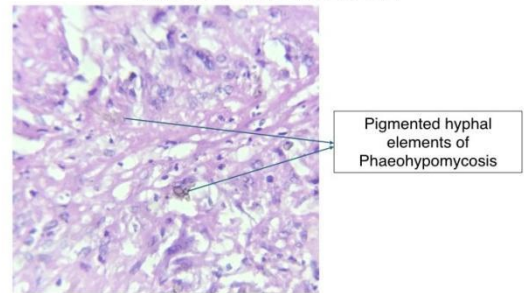
PHAEOHYPOMYCOSIS in Fine Needle Aspiration Cytology



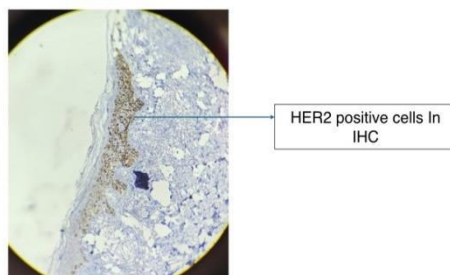
SICKLE CELLS in SICKLING TEST



PHAEOHYPOMYCOSIS in HISTOPATHOLOGY



HER2 POSITIVE IN PAGET'S DISEASE



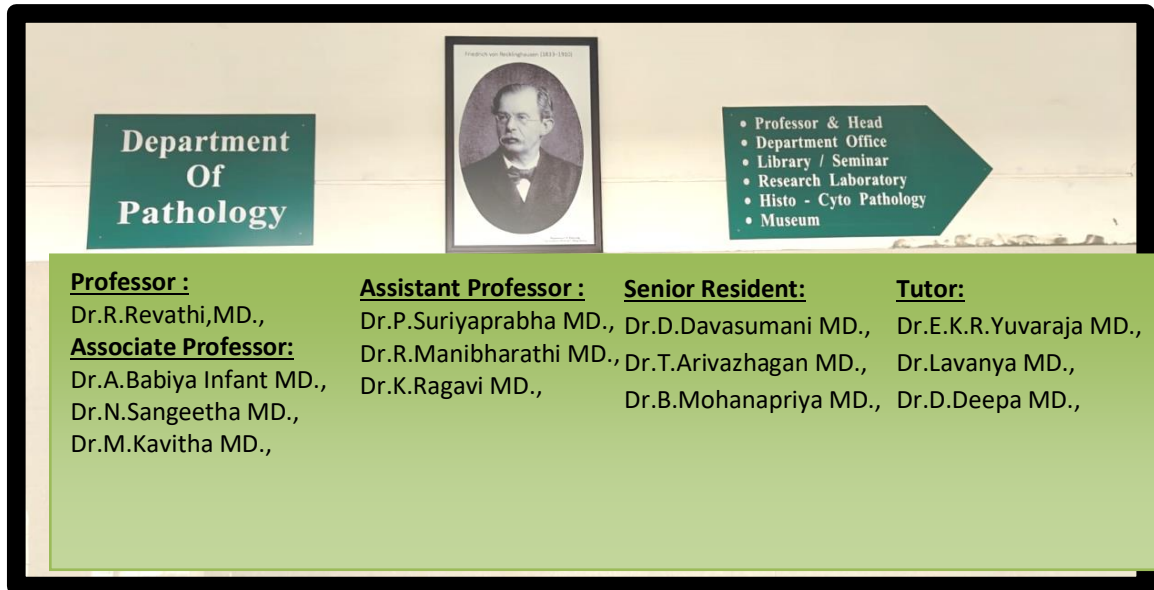
FLEA BITTEN APPEARANCE OF KIDNEY



## 6. Photos of the Department /Labs/ Facilities



## Department of Pathology



**Department Of Pathology**

• Professor & Head  
• Department Office  
• Library / Seminar  
• Research Laboratory  
• Histo - Cyto Pathology  
• Museum

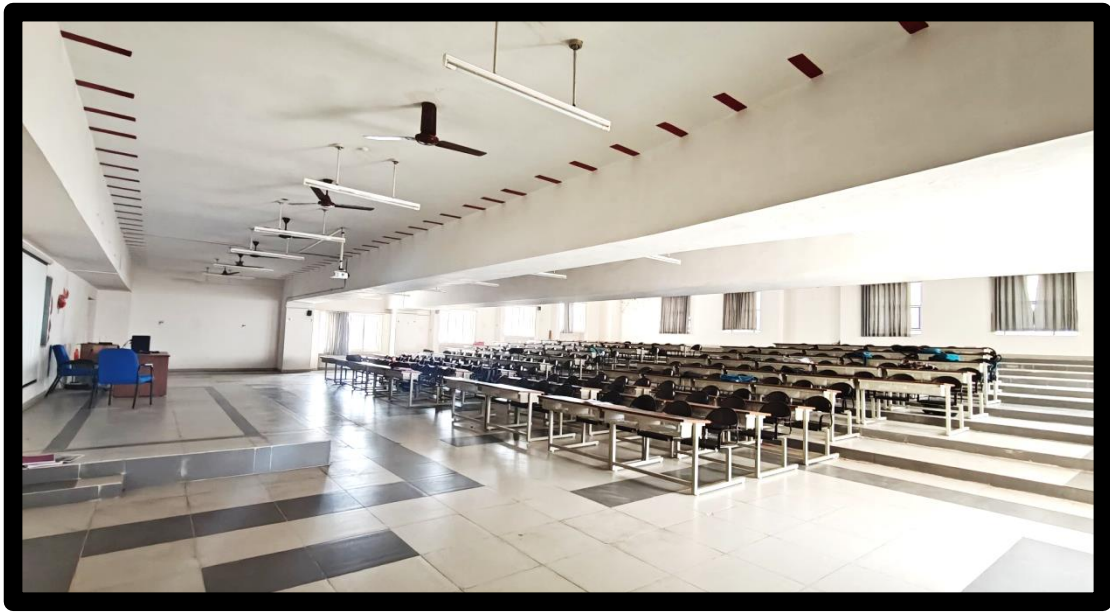
**Professor :**  
Dr.R.Revathi,MD.,  
**Associate Professor:**  
Dr.A.Babiya Infant MD.,  
Dr.N.Sangeetha MD.,  
Dr.M.Kavitha MD.,

**Assistant Professor :**  
Dr.P.Suriyaprabha MD.,  
Dr.R.Manibharathi MD.,  
Dr.K.Ragavi MD.,

**Senior Resident:**  
Dr.D.Davasumani MD.,  
Dr.T.Arivazhagan MD.,  
Dr.B.Mohanapriya MD.,

**Tutor:**  
Dr.E.K.R.Yuvaraja MD.,  
Dr.Lavanya MD.,  
Dr.D.Deepa MD.,

## Lecture Hall for Undergraduate



## Museum for Undergraduate



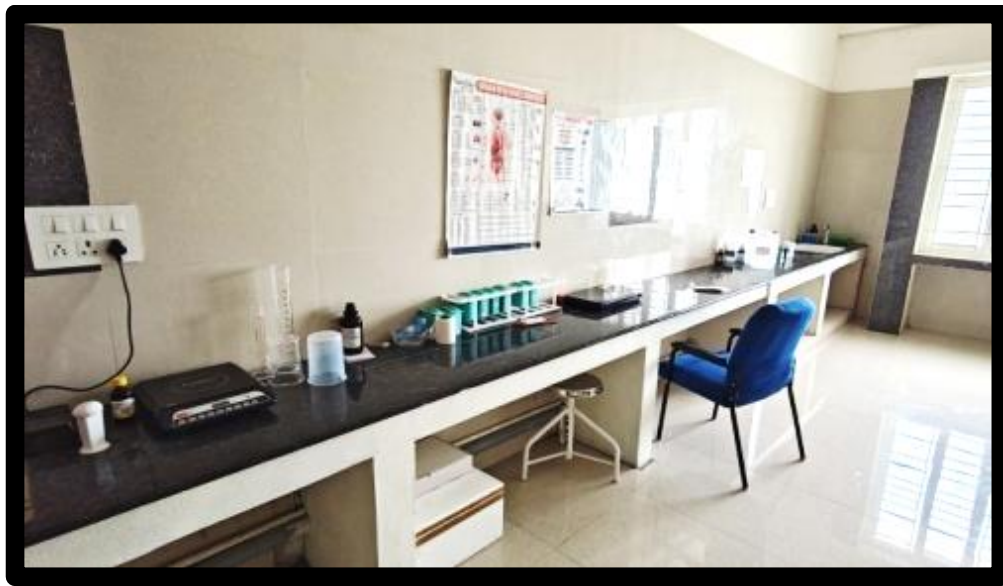
**Histopathology Laboratory for Undergraduate**



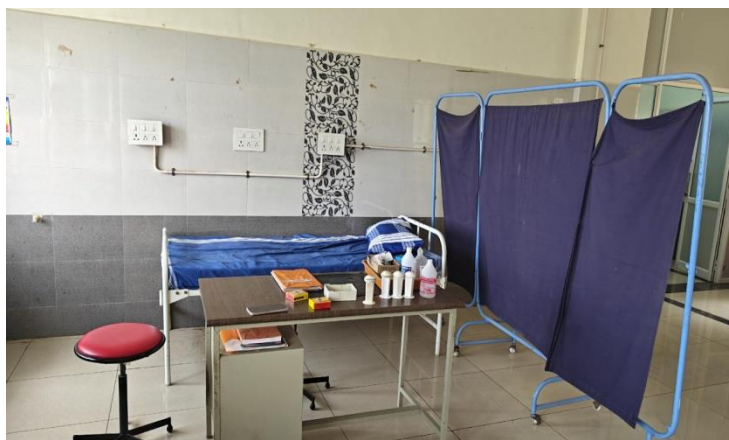
**Hematology Laboratory for Undergraduate**



### **Immuno-Histochemistry & Special Stain Laboratory**



### **Cytopathology Room**

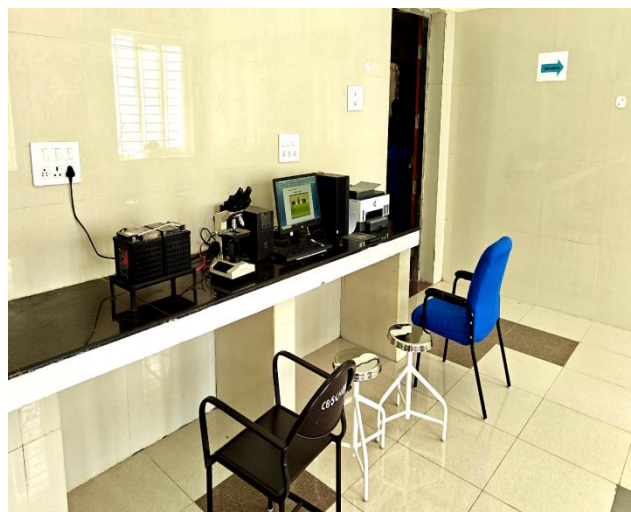




### Department Library



### Research Laboratory



### 8.List of Equipment's Available

CENTRAL LABORATORY	DEPARTMENT HISTOPATHOLOGY
<ol style="list-style-type: none"><li>1. Semi-Automated Coagulation analyzer</li><li>2. Fully automated 3 part hematology analyzer</li><li>3. Automated ESR analyzer</li><li>4. QBC centrifuge</li><li>5. Fully automated coagulation analyzer</li><li>6. Fully automated 3 part hematology analyzer</li><li>7. Fully automated 3 part hematology analyzer</li></ol>	<ol style="list-style-type: none"><li>1. Heated paraffin embedding module</li><li>2. Hot plate</li><li>3. Paraffin embedding bath</li><li>4. Manual Rotary microtome</li><li>5. Grossing station</li><li>6. Cold plate for tissue embedding</li><li>7. Fully automated embedding system</li><li>8. Automated Microtome</li></ol>



### **3 Part Fully Automated Hematology Analyzer**



### **Fully Automated Coagulation Analyzer**



**ESR**

**Automated  
machine**



**Automated Tissue Processor**



## Automated Paraffin Embedding Module



## Heated Paraffin Embedding module



## Automated Microtome



## Centrifuge





### **9.Completed Research Project:**

1.Evaluation of Cytomorphological features of ExtraPulmonary tuberculosis in CBNAAT positive cases – Dr.R.Manibarathi

2.Analysing the diagnostic efficacy of rapid urine screening tests in diagnosis of symptomatic urinary tract infections – Dr.D.Davasumani

### **10. Ongoing Research**

1. Impact of Host genetic determinants in the pathogenesis and treatment of breast cancer among South Indian women – Dr.Revathi Professor & Head

2. Evaluation of cervical lesions from cytological patterns in PAP smear -A retrospective institutional study - Dr.Mohanapriya Senior Resident

3. Gamut of dermatological lesions on Histopathological examination in a tertiary care centre: A cross sectional retrospective study - Dr.Mohanapriya Senior Resident

4. A Retrospective study on Histomorphological spectrum of malignancies in a tertiary care centre – Dr.Ragavi Assistant Professor

5. Trends of Histopathological spectrum of lesions in cervix biopsies in a tertiary care centre: A retrospective study – Dr.Ragavi Assistant Professor

6. Evaluation of clinical outcome following massive blood transfusion in a tertiary care Hospital – Dr.T.Arivazhagan Senior Resident

7. Cytological gamut of lymph node lesions on Fine Needle Aspiration Cytology in a tertiary care centre - A cross sectional retrospective study Dr Yuvarajan E K R Tutor

8. Histopathological array of leprosy in a tertiary care centre A cross sectional retrospective study Dr Yuvarajan E K R Tutor

### **12. Paramedical Courses Available**

<b>YEAR</b>	<b>NEW COURSE INTRODUCED</b>
2021	Diploma in Medical laboratory Technology
2025	B.sc Medical Laboratory Technology